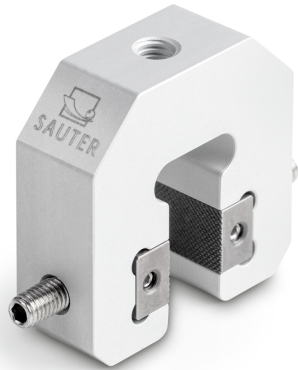


# KERN AE 500

**KERN**

Quickly fittable universal screw tension clamp for tension and compression testing for a force range up to 500 N



## Category

Brand	Sauter
Product category	Force measurement
Product group	Screw tension clamp
Product family	AE

## Construction

Dimensions completely mounted (W×D×H)	51×41×15 mm
Material	aluminium
Material housing	aluminium
Mounting - force dissipation	Threaded hole M6
Tensile/compressive force [Max]	500 N
Maximum clamp width	15 mm
Clamping width	10 mm

## Packing & Shipping

Readability force [d] (N)	1 d
Dimensions packaging (W×D×H)	51×41×15 mm
Net weight	0,063 kg
Shipping method	Parcel service
Net weight approx.	0,10 kg
Gross weight approx.	0,10 kg
Shipping weight	0,1 kg

## Pictograms

STANDARD

